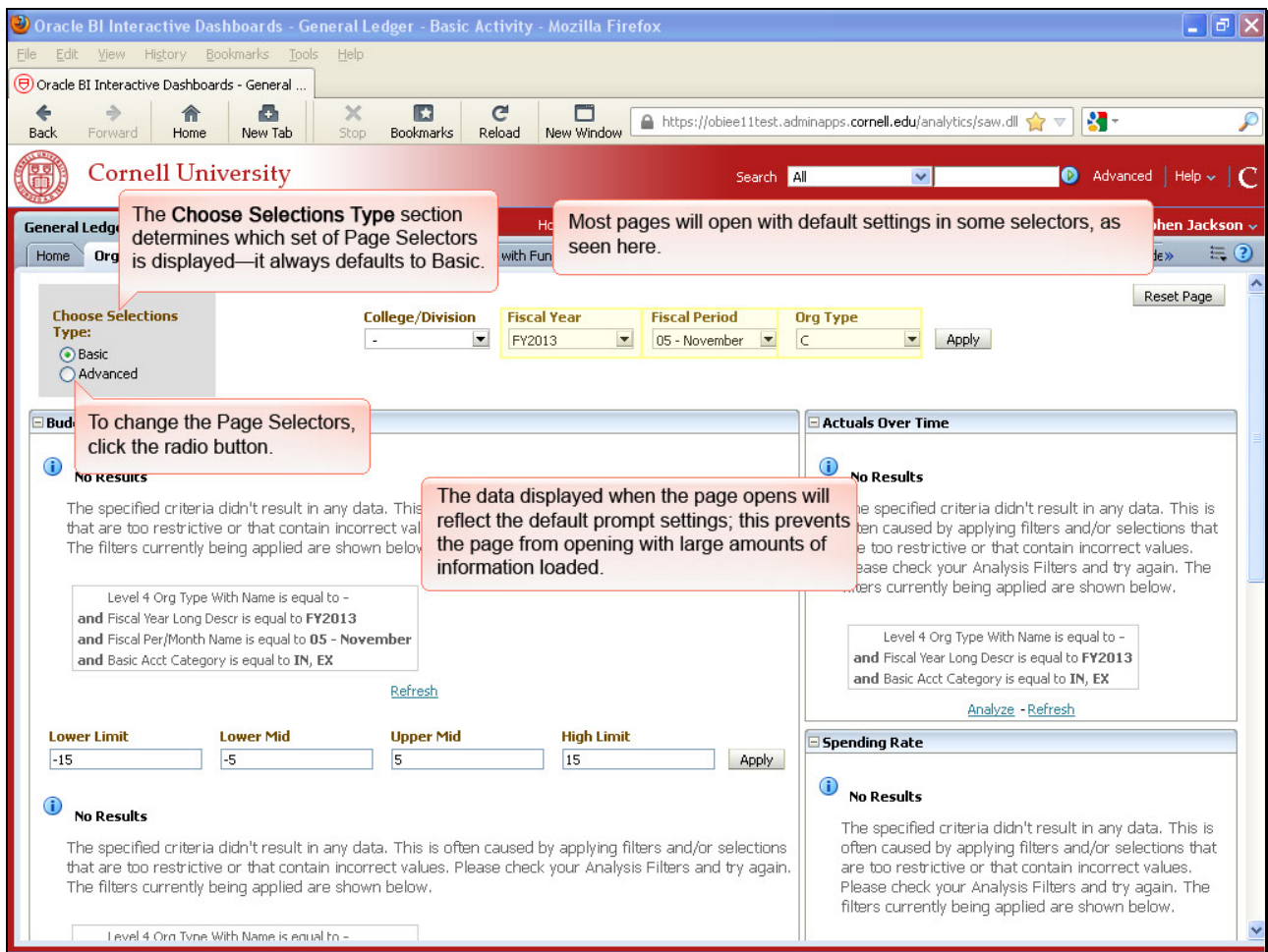


Chapter 2: Using Page Selectors to Filter Results

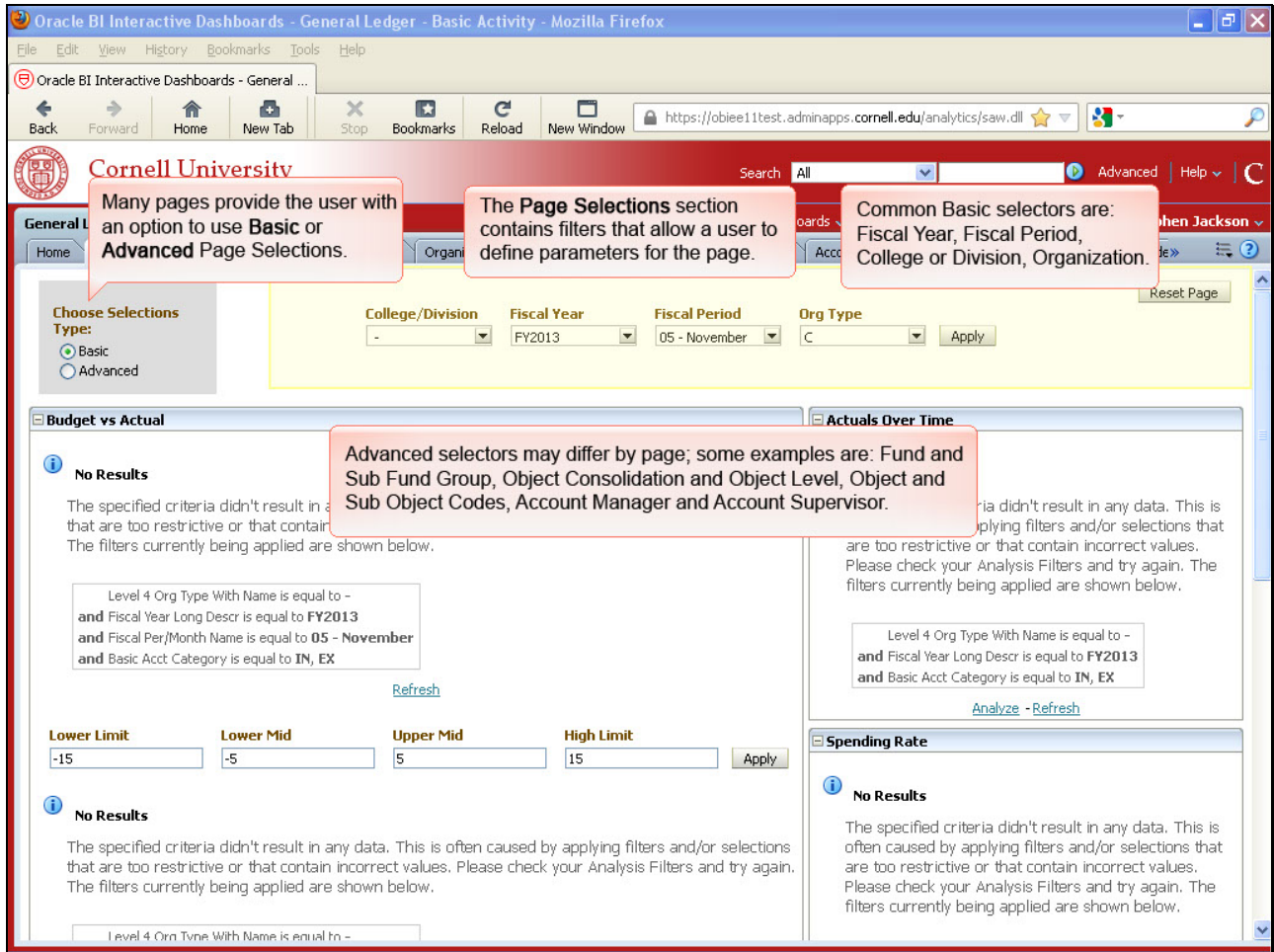


Most pages will open with default settings in some selectors, as seen here.

The data displayed when the page opens will reflect the default prompt settings; this prevents the page from opening with large amounts of information loaded.

The **Choose Selections Type** section determines which set of Page Selectors is displayed—it always defaults to Basic.

To change the Page Selectors, click the radio button.



The **Page Selections** section contains filters that allow a user to define parameters for the page.

Many pages provide the user with an option to use **Basic** or **Advanced** Page Selections.

Common Basic selectors are: Fiscal Year, Fiscal Period, College or Division, Organization

Advanced selectors may differ by page; some examples are: Fund and Sub Fund Group, Object Consolidation and Object Level, Object and Sub Object Codes, Account Manager and Account Supervisor.

The screenshot shows the Oracle BI Interactive Dashboards interface. At the top, the browser title is "Oracle BI Interactive Dashboards - General Ledger - Basic Activity - Mozilla Firefox". The address bar shows the URL "https://obiee11test.adminapps.cornell.edu/analytics/saw.dll". The page header includes the Cornell University logo and a search bar. The main navigation bar shows "General Ledger - Basic Activity" and various tabs like "Home", "Catalog", "Favorites", "Dashboards", "New", "Open", "Signed In As Stephen Jackson".

The main content area is titled "General Ledger - Basic Activity" and includes a "Choose Selections Type" section with two radio buttons: "Basic" (selected) and "Advanced". A red callout box with the text "Select the Advanced radio button." points to the "Advanced" radio button. Below this, there are filter fields for "College/Division", "Fiscal Year" (FY2013), "Fiscal Period" (05 - November), and "Org Type" (C). The "No Results" message is displayed in the main content area, stating: "The specified criteria didn't result in any data. This is often caused by applying filters and/or selections that are too restrictive or that contain incorrect values. Please check your Analysis Filters and try again. The filters currently being applied are shown below." The filters listed are: "Level 4 Org Type With Name is equal to - and Fiscal Year Long Descr is equal to FY2013 and Fiscal Per/Month Name is equal to 05 - November and Basic Acct Category is equal to IN, EX".

Below the filters, there are input fields for "Lower Limit", "Lower Mid", "Upper Mid", and "High Limit", with values -15, -5, 5, and 15 respectively. The "Spending Rate" section also shows "No Results".

Select the **Advanced** radio button.

The screenshot shows the Oracle BI Interactive Dashboards interface for General Ledger - Basic Activity. The browser window title is "Oracle BI Interactive Dashboards - General Ledger - Basic Activity - Mozilla Firefox". The address bar shows the URL "https://obiee11test.adminapps.cornell.edu/analytics/saw.dll". The page header includes the Cornell University logo and a search bar. The main navigation bar shows "General Ledger - Basic Activity" and "Organization Summary". The "Choose Selections" section includes filters for College/Division, Fiscal Year (FY2013), Fiscal Period (05 - November), and Org Type (C). Below this are sections for Fund Grp And Name, Sub Fund Grp And Name, Sub Fund Program And Name, Object Consolidation, Object Consolidation Name, Object Level, Object Level Name, Object Cd And Name, Sub Object Cd And Name, Org Mgr Name, Sub Account FRC, AICPA Function Name, and Higher Ed Function Name. Two panels, "Budget vs Actual" and "Actuals Over Time", both display "No Results" messages. The "Budget vs Actual" panel includes a list of filters: "Level 4 Org Type With Name is equal to - and Fiscal Year Long Descr is equal to FY2013 and Fiscal Per/Month Name is equal to 05 - November and Basic Acct. Category is equal to IN, EX". Below these panels are input fields for Lower Limit (-15), Lower Mid (-5), Upper Mid (5), and High Limit (15), with an "Apply" button. A "Spending Rate" section is partially visible at the bottom.

Additional page selectors provided.