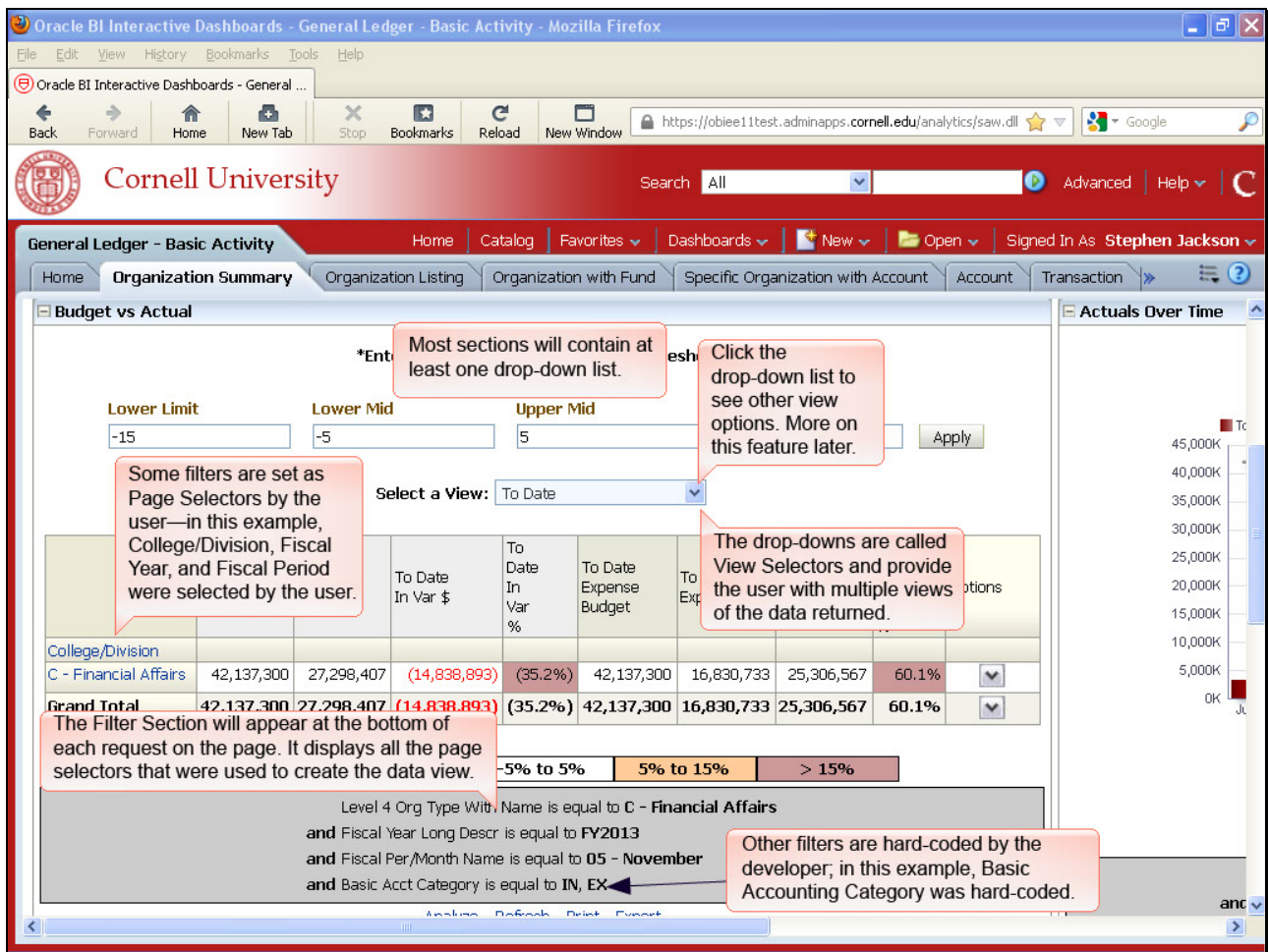


Chapter 5: View Selectors within Page Sections



Most sections will contain at least one drop-down list.

The drop-downs are called View Selectors and provide the user with multiple views of the data returned.

Click the drop-down list to see other view options. More on this feature later.

The Filter Section will appear at the bottom of each request on the page. It displays all the page selectors that were used to create the data view.

Some filters are set as Page Selectors by the user—in this example, College/Division, Fiscal Year, and Fiscal Period were selected by the user.

Other filters are hard-coded by the developer; in this example, Basic Accounting Category was hard-coded.

General Ledger - Basic Activity

Home | Catalog | Favorites | Dashboards | New | Open | Signed In As: Stephen Jackson

Home | Organization Summary | Organization Listing | Organization with Fund | Specific Organization with Account | Account | Transaction

Budget vs Actual

Lower Limit: -15 | Lower M: -5 | 5 | 15 | Apply

Select a View: Selected Month (dropdown menu)

College/Division	Income Budget	Income	In Var \$	var %	Budget	expe			
C - Financial Affairs	0	80,495	80,495	0.0%	0				
Grand Total	0	80,495	80,495	0.0%	0	41,986	41,986	0.0%	

Level 4 Org Type With Name is equal to C - Financial Affairs
 and Fiscal Year Long Descr is equal to FY2013
 and Fiscal Per/Month Name is equal to 05 - November
 and Basic Acct Category is equal to IN, EX

[Analyze](#) - [Refresh](#) - [Print](#) - [Export](#)

Actuals Over Time

To Date Expense

45,000K
40,000K
35,000K
30,000K
25,000K
20,000K
15,000K
10,000K
5,000K
0K

Jul Aug Sep Oc

There may be several options available. This View Selector contains three.

Selecting a different view will instantly change the data displayed.