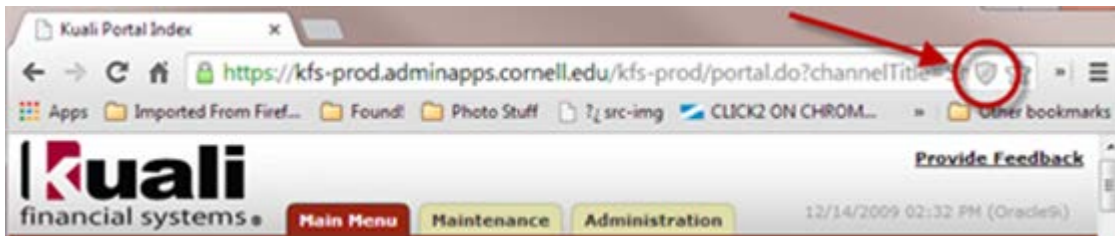


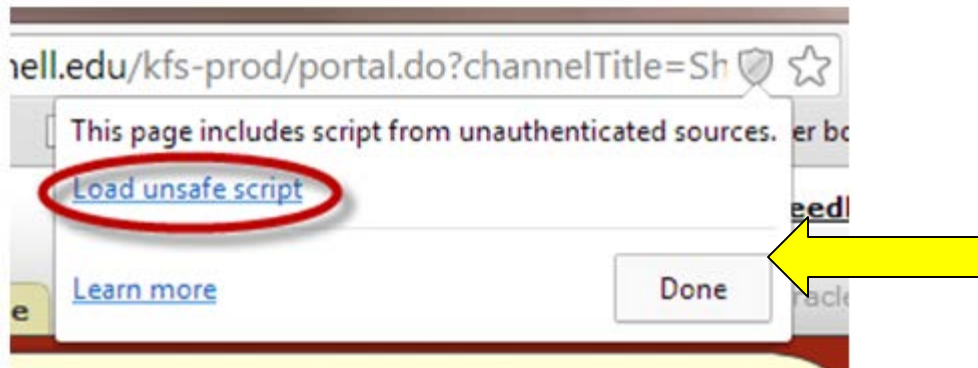


When using Google Chrome or Mozilla Firefox, you may encounter issues accessing e-SHOP through KFS. If you logon to e-SHOP and see the Kualo logo and tabs with a blank screen below, please follow the steps below to modify your browser settings.

1. Locate the shield icon in the address bar and click it.



2. A box will pop up. Click the "Load unsafe script" link.



3. Click the Done button. You should now be able to access e-SHOP.

4. If you are unable to modify these settings or they do not correct the problem, please contact your desktop support person for assistance.